

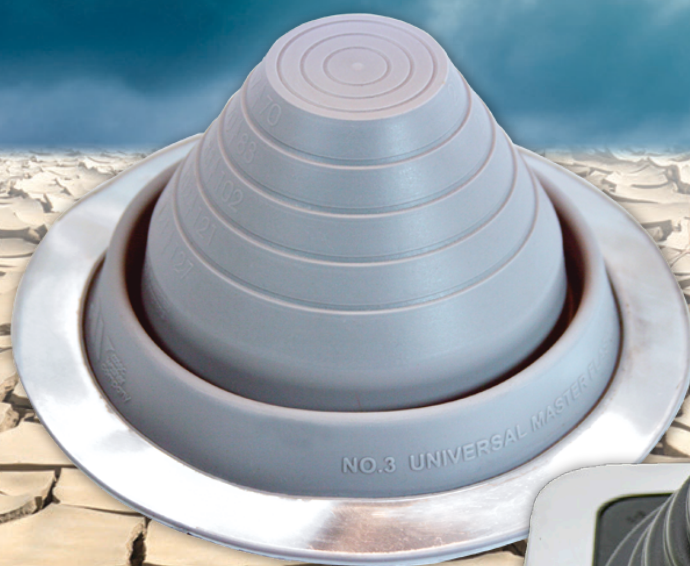
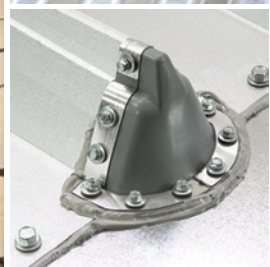
# Master Flash®

8/2016

Quality and Service **Worldwide**

Since 1968

**Sealing pipes, cables, conduit, wire, solar,  
refrigeration lines, venting. etc.,**



Master Flash®  
Roof Pitch Calculator



**INTERCORP**   
www.strong-point.net

Los Angeles  
800.762.2004

New York  
888.322.2622

Chicago  
800.533.9669

Dallas  
800.558.7222

Atlanta  
800.822.9690

Portland  
800.434.5606

Houston  
800.558.7222

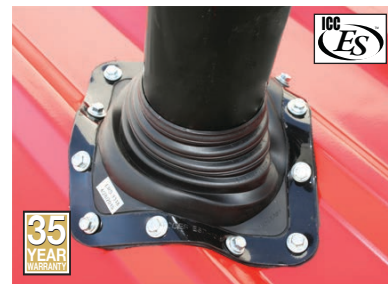
Cleveland  
800.533.9669

Miami  
800.822.9690



# 35 Year Master Flash®

The Only ICC Flashing of it's kind,  
Listed with the Florida & California Building Codes®.  
The first ICC listed flashing for the Metal Building  
Industry with a 35 year warranty  
One Compound: Black EPDM

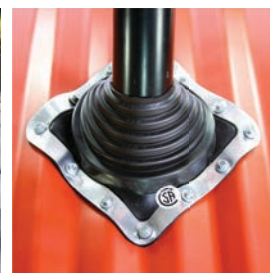


**35 Year** Pipe Range: 1/8"-28-1/2" (0-136mm) • Base Range: 2-1/4" (57mm) to 34" (863mm)

## Standard Master Flash®



Two Compounds:  
EPDM / High Temp Red Silicone



BROWN



BLACK



GREY



WHITE



DARK GREEN



LIGHT GREEN



DARK BLUE



LIGHT BLUE



BRIGHT RED



TERRA COTTA

**Mini** Pipe Range: 1/8" - 3/4" (3 - 19mm)

Top opening: Closed • Cut to suit pipe size: 1/8" - 3/4" (3-19mm) • Base: 2 - 1/4" (57mm)

**#1** Pipe Range: 1/4" - 2-3/4" (6 - 70mm)

Top opening: Closed • Cut to suit pipe size: 1/4" - 2-3/4" (6 - 70mm) • Base: 4-1/2" (114mm)

**#2** Pipe Range: 7/8" - 4" (22 - 101mm)

Top opening: 7/8" (22mm) • Cut to suit pipe size: 7/8" - 4" (22 - 101mm) • Base: 6" (152mm)

**#3** Pipe Range: 1/4" - 5-3/4" (6 - 146mm)

Top opening: Closed • Cut to suit pipe size : 1/4" - 5-3/4" (6 - 146mm) • Base: 8" (203mm)

**#4** Pipe Range: 2-3/4" - 7" (70 - 177mm)

Top opening: 2-1/4" (57mm) • Cut to suit pipe size: 2-3/4" - 7" (70 - 177mm) • Base: 10" (254mm)

**#5** Pipe Range: 4" - 8-1/4" (101 - 209mm)

Top opening: 3-1/2" (89mm) • Cut to suit pipe size : 4" - 8-1/4" (101 - 209mm) • Base: 11" (279mm)

**#6** Pipe Range: 4-3/4" - 10" (121 - 254mm)

Top opening: 3-3/4" (95mm) • Cut to suit pipe size : 4-3/4" - 10" (121 - 254mm) • Base: 12" (304mm)

**#7** Pipe Range: 5-1/2" - 11-1/2" (140 - 292mm)

Top opening: 4-3/4" (120mm) • Cut to suit pipe size : 5-1/2" - 11-1/2" (140 - 292mm) • Base: 14" (355mm)

**#8** Pipe Range: 6-3/4" - 13-1/2" (171 - 343mm)

Top opening: 5-1/2" (140mm) • Cut to suit pipe size : 6-3/4" - 13-1/2" (171 - 343mm) • Base: 17" (431mm)

**#8X Fix-A-Flash** Pipe Range: Closed Top 0" - 15" (0-381mm)

Top opening: Closed • Cut to suit pipe size: Closed 0" - 15" (0-381mm) • Base: 19-1/2" (495mm)

**#9** Pipe Range: 9-1/2" - 20-1/2" (241 - 520mm)

Top opening: 8" (203mm) • Cut to suit pipe size: 9-1/2" - 20-1/2" (241 - 520mm) • Base: 25" (635mm)

**#9X** Pipe Range: 8" - 20-1/2" (203 - 520mm)

Top opening: 6" (152mm) • Cut to suit pipe size: 8" - 20-1/2" (203 - 520mm) • Base: 25" (635mm)

**Maxi Closed** Pipe Range: 0" - 28-1/2" (0 - 724mm)

Top opening: Closed • Cut to suit pipe size : 0" - 28-1/2" (0 - 724mm) • Base: 34" (863mm)

**Maxi Open** Pipe Range: 12" - 28-1/2" (304 - 724mm)

Top opening: 10-1/4" (260mm) • Cut to suit pipe size: 12" - 28-1/2" (304 - 724mm) • Base: 34" (863mm)



**NOTE: Colors are only available for the Standard & Universal Master Flash®**

# Universal Master Flash® All Around Performance



BROWN



BLACK



DARK GREY



LIGHT GREY



WHITE



DARK GREEN



LIGHT GREEN



DARK BLUE



LIGHT BLUE



BRIGHT RED



TERRA COTTA

## All Around Design Excellence

This universal flashing has been designed to fit virtually all panel configurations. Sleeve flexibility absorbs vibration and pipe movement caused by expansion/contraction. Easy on-site customization can accommodate all normal installations.

**Mini** Pipe Range: 0" - 3/4" (0 - 19mm)

Top opening: Closed • Overall height: 1-1/2" (38mm) • Base: 4" (101mm)

**#1** Pipe Range: 1/4" - 2-1/2" (6 - 63mm)

Top opening: Closed • Overall height: 3-1/4" (82mm) • Base: 3-1/4" (82mm)

**#2** Pipe Range: 1-3/4" - 3" (44 - 76mm)

Top opening: 1-1/4" (31mm) • Overall height: 4" (101mm) • Base: 6-1/4" (158mm)

**#3** Pipe Range: 1/4" - 5" (6 - 127mm)

Top opening: Closed • Overall height: 4" (101mm) • Base: 7-3/4" (196mm)

**#4** Pipe Range: 3" - 6-1/4" (76 - 158mm)

Top opening: 2-1/4" (57mm) • Overall height: 4-3/4" (120mm) • Base: 9-1/4" (234mm)

**#5** Pipe Range: 4-1/4" - 7-3/4" (107 - 196mm)

Top opening: 3-1/2" (88mm) • Overall height: 4-1/4" (107mm) • Base: 10-1/2" (266mm)

**#6** Pipe Range: 5" - 9" (127 - 228mm)

Top opening: 5" (127mm) • Overall height: 6" (152mm) • Base: 13" (330mm)

**#7** Pipe Range: 6" - 11" (152 - 279mm)

Top opening: 5-1/2" (139mm) • Overall height: 5-1/2" (139mm) • Base: 14-1/2" (368mm)

**#8** Pipe Range: 7" - 13" (177 - 330mm)

Top opening: 6" (152mm) • Overall height: 6" (152mm) • Base: 16-1/2" (412mm)

**#9** Pipe Range: 9" - 19" (228 - 482mm)

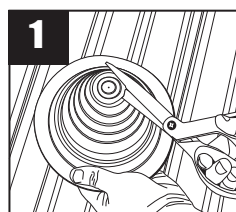
Top opening: 7-3/4" (196mm) • Overall height: 9" (228mm) • Base: 25 - 1/4" (641mm)



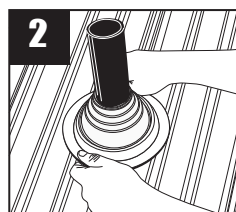
12 Colors • Two Compounds:  
EPDM / High Temp Red & Grey Silicone



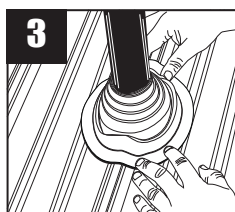
### Measure & Trim



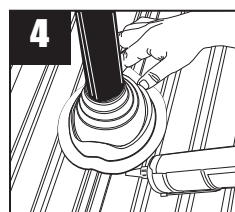
### Slide



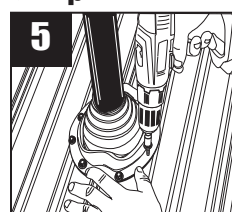
### Form



### Seal



### Complete



20  
YEAR  
WARRANTY





# Multi-Flash Master Flash® “Two Flashings in one”



**Mini Port** Pipe Range: Standard 1/4"-2-3/4" (6 - 70mm) Retrofit 1-1/4"-2-1/4" (25 - 57mm)  
Top opening: Closed • Overall height: 2-1/4" (57mm) • Base: 4-1/2" (114mm)

**#2** Pipe Range: Standard 7/8" - 4" (22 - 101mm) Retrofit 1/2" - 3-1/2" (12 - 89mm)  
Top opening: 7/8" (22mm) • Overall height: 2-3/4" (70mm) • Base: 6" (152mm)

**#3** Pipe Range: Standard 1/4" - 5-3/4" (6 - 146mm) Retrofit 2" - 4-1/2" (50 - 114mm)  
Top opening: Closed • Overall height: 3" (76mm) • Base: 8" (203mm)

**#4** Pipe Range: Standard 2-3/4" - 7" (70 - 177mm) Retrofit 2-1/4" - 6-1/2" (57 - 165mm)  
Top opening: 2-3/4" (70mm) • Overall height: 4-3/4" (120mm) • Base: 10" (254mm)

**#5** Pipe Range: Standard 4" - 8-1/4" (101 - 209mm) Retrofit 3-1/2" - 6-3/4" (90 - 171mm)  
Top opening: 4" (101mm) • Overall height: 4" (101mm) • Base: 11" (279mm)

**#6** Pipe Range: Standard 4-3/4" - 10" (121 - 254mm) Retrofit 4-1/4" - 9-1/2" (108 - 241mm)  
Top opening: 4-3/4" (121mm) • Overall height: 4-1/2" (114mm) • Base: 12" (304mm)

**#7** Pipe Range: Standard 5-1/2" - 11-1/2" (140 - 292mm) Retrofit 5" - 11" (127 - 279mm)  
Top opening: 5-1/2" (140mm) • Overall height: 5-1/2" (140mm) • Base: 14" (355mm)

**#8** Pipe Range: Standard 6-3/4" - 13-1/2" (171 - 343mm) Retrofit 6-1/2" - 12" (165 - 304mm)  
Top opening: 6-3/4" (171mm) • Overall height: 5-3/4" (146mm) • Base: 17" (431mm)

**#9** Pipe Range: Standard 9-1/2" - 20-1/2" (241 - 520mm) Retrofit 9" - 20" (228 - 508mm)  
Top opening: 9-1/2" (241mm) • Overall height: 5-3/4" (146mm) • Base: 25" (635mm)

**Maxi** Pipe Range: Standard 12" - 28-1/2" (305 - 724mm) Retrofit 13" - 27" (330 - 685mm)  
Top opening: 12" (304mm) • Overall height: 7-1/2" (190mm) • Base: 34" (863mm)



Two Compounds:  
EPDM / High Temp Grey Silicone



## Universal Retrofit Master Flash®



Two Compounds:  
EPDM / High Temp Red & Grey Silicone

**#1** Pipe Range: 3/4" - 2-3/4" (19 - 70mm)  
Top opening: 3/4" (19mm) • Cut to suit pipe size: 3/4" - 2-3/4" (19 - 69mm) • Base: 6 - 1/4" (158mm)

**#2** Pipe Range: 2" - 7-1/4" (50 - 184mm)  
Top opening: 2" (50mm) • Cut to suit pipe size: 2" - 7-1/4" (50 - 184mm) • Base: 10-3/4" (273mm)

**#3** Pipe Range: 3-1/4" - 10" (95 - 254mm)  
Top opening: 3-1/4" (50mm) • Cut to suit pipe size: 3-1/4" - 10" (95 - 254mm) • Base: 14-1/2" (368mm)



## Retrofit Master Flash®



Two Compounds: EPDM / High Temp Red Silicone  
EPDM Application: plastic zip tie and fastener snaps included.  
Silicone Application: aluminum zip tie and fastener snaps included.

**#1** Pipe Range: 1/2" - 4" (12 - 101mm)  
Top opening: 1/2" (12mm) • Cut to suit pipe size: 1/2" - 4" (12 - 101mm) • Base: 8-3/16" (205mm)

**#2** Pipe Range: 4" - 9-1/4" (101 - 235mm)  
Top opening: 4" (101mm) • Cut to suit pipe size: 4" - 9-1/4" (101 - 235mm) • Base: 14-1/4" (362mm)

**#3** Pipe Range: 9-1/4" - 16-1/4" (235 - 412mm)  
Top opening: 9-1/4" (235mm) • Cut to suit pipe size: 9-1/4" - 16-1/4" (235 - 412mm) • Base: 21-1/2" (546mm)



# Fix-A-Flash Master Flash® **Oversized hole in your roofing?** Aztec has the answer... The base is designed for a oversized hole cut for your pipe flashing



Two Compounds:  
EPDM / High Temp Red Silicone

**Fix-A-Flash Closed Top** Pipe Range: 0"-15" (0 - 381mm)  
Top opening: Closed • Overall height: 0" - 15" (0 - 381mm) • Large Base: 19-1/2" (495mm)



## Extreme Angle Master Flash®

The built in 40° degree pitch allows to handle any extreme roof pitch (35° - 65°)



Two Compounds:  
EPDM / High Temp Grey Silicone

**#1** Pipe Range: 1/4"- 5-3/4" (6 - 146mm)  
Top opening: Closed • Cut to suit pipe size: 1/4" - 5-3/4" (6 - 146mm) • Base: 11" (279mm)



## Multi-Flash Square Vent Master Flash®

**Two Applications • One Design**



- Compound / EPDM
- Stainless steel gripper to secure a retro custom fit.

**#1** Pipe Range: Standard 3/8"-5" (20 - 125mm) Retrofit 1-1/2"-4" (38 - 101mm)  
Top opening: Closed • Overall height: 3-3/4" (95mm) • Base: 8" (203mm)

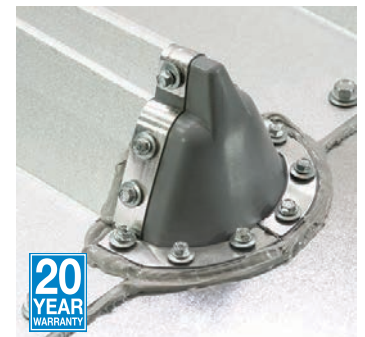


## End Cap Master Flash®

**Standing Seam Roof End Cap Flashing**



Flexible width allows for most panel configurations  
Expansion feature accommodates all seam heights  
allows side wall of end cap to form on roof panels  
Base allows application at both terminating points  
of the sheeting or roofing material.



**#Mini** Overall Height: 3/4" (19mm)  
Inner Depth: 2" (50mm) • Base: 2-3/4" (70mm) Wide X 3" (76mm) Long

**#1** Overall Height: 3" (76mm)  
Inner Wall Width: 3" (76mm) • Inner Depth: 2" (50mm) • Base: 4-1/4" (107mm)

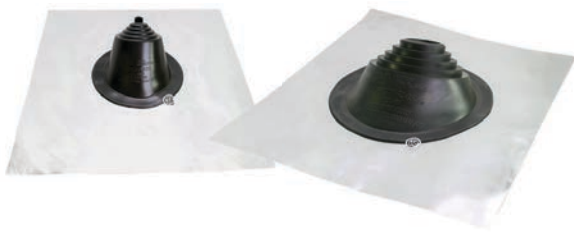
**#2** Overall Height: 3-1/4" (83mm)  
Inner Wall Width: 5-1/4" (133mm) • Inner Depth: 4-1/4" (107mm) • Base: 7-1/4" (184mm)

**Applications:**  
**Skylights • Metal Curbs**  
**Ridge Applications**  
**Job site Retrofit**

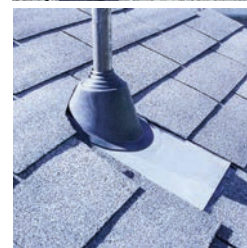


## Residential Master Flash®

Available in Aluminum or Lead Base.



Two Compounds EPDM / Red / Grey Silicone  
The built in 20° pitch allows adaptability to almost any roof pitch including 45° Self extinguishing feature enables use with type "B" vents



**Mini** Pipe Range: 1/4" - 3" (6 - 76mm)

Top opening diameter: Closed • Pull to suit pipe size: 1/4" - 3" (6-76mm) • Base: 16"X19-1/4" (410X490mm)

**#1** Pipe Range: 3" - 8" (76 - 203mm)

Top opening diameter: 2-1/2" (63mm) • Pull to suit pipe size: 3" - 8" (76 - 203mm) • Base: 20"X24" (410X490mm)

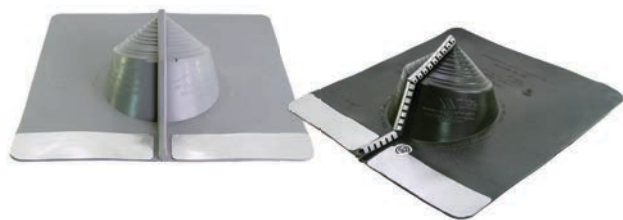
**#2** Pipe Range: 8" - 11" (203 - 279mm)

Top opening diameter: 5-5/8" (142mm) • Pull to suit pipe size: 8" - 11" (203 - 279mm) • Base: 26"X30" (660X762mm)

**#3** Pipe Range: 11" - 18" (279 - 457mm)

Top opening diameter: Closed • Pull to suit pipe size: 11" - 18" (279 - 457mm) • Base: 35"X35" (889X889mm)

## Electrical Mast Connection Master Flash®



Two Compounds:  
EPDM / High Temp Red & Grey Silicone

The built in 20° pitch allows adaptability to almost any roof pitch including 45°  
Stainless steel grippers included



**EMC** Pipe Range: 0"-5-3/8" (0-136mm) Top opening: Closed • Base: 15" (381mm)

## Box Gutter Expansion Joint Master Flash®

Applications: Transition Walls • Parapet Walls • Stepped Roofs • Corrugated Metal Roofs  
Roof Penetrations • Expansion Joint • Skylights



One Compound / EPDM / Width: 9", 12", & 18" Thick: (.059) Available Lengths: 12', 33' & 50'

## (SLF) Stretchable Linear Flash Master Flash® Roof Flashing System Stretch and Seal

Applications: Transition Walls • Parapet Walls • Stepped Roofs • Corrugated Metal Roofs • Roof Penetrations • Square Vents • Large Pipes • Skylights



One Compound / EPDM / Width: 11" (280mm) Thick (1.7mm) Available Lengths: 12' & 33'

# Master Flash®

## REPLICATED BUT NEVER DUPLICATED!



Universal Master Flash®

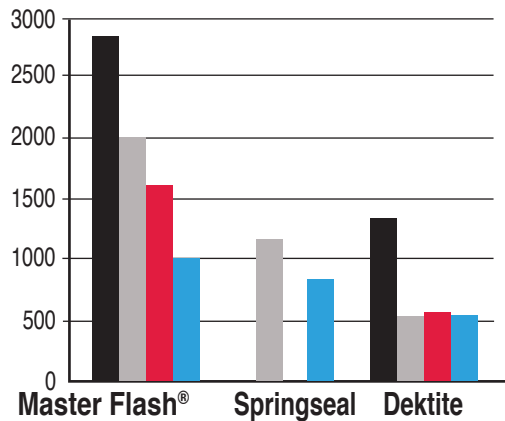


Competitor's Product

**\* Graph Key Code:** Grey EPDM    Grey EPDM w/ IR Radiation & UV Radiation Aged 70 Hours @ 100°C  
Black EPDM    Black EPDM w/ IR Radiation & UV Radiation Aged 70 Hours @ 100°C

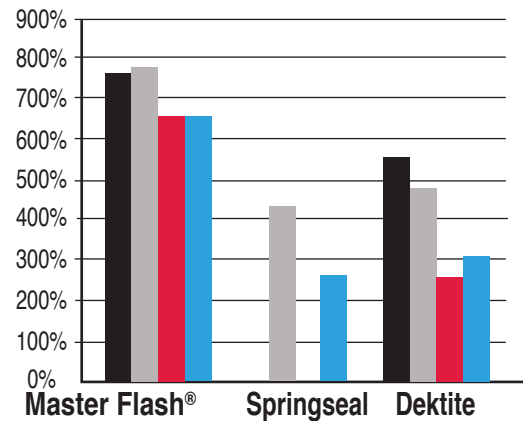
\* Competitor's product picture is representative of a substandard off-shore product, is not meant to depict a Dektite or Springseal product. \* Material test results are from 2012 sample

### Tensile strength



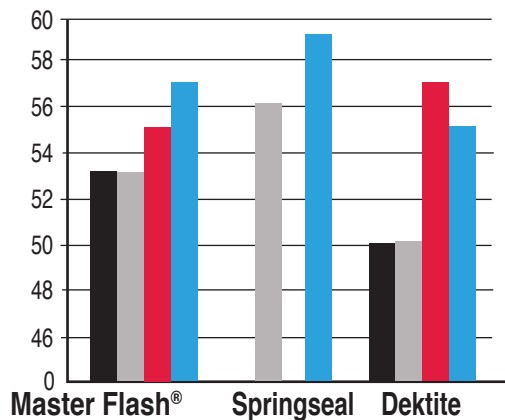
**Tensile strength** - The maximum stress "in pounds" that a material can withstand while being stretched or pulled before snapping, tearing or breaking. After 70 hours at 212° degree F, **Master Flash®** is almost two times stronger than other brands.

### Hardness



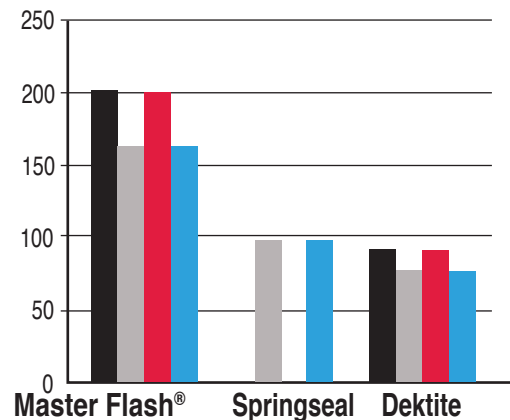
**Hardness** - Harder rubber will tend to breakdown and become brittle faster, meaning it will crack due to UV and sun damage or at the end of the day, leak. **Master Flash®** Hardness increased 4 points after the test while other brands increased 7 points.

### Elongation



**Elongation** - Measures how much rubber stretches before it snaps or breaks. For example: 1" square size of **Master Flash®** would stretch 600% while other brands stretch significantly less. This is very important and makes installation easier and faster when the flashing is cut 20-30% smaller than the pipe. This is equally important over the life of the product as pipes expand and contract with the elements and the flashing needs to accommodate these changes.

### Tear



**Tear** - Measures the pressure a tear in the material can handle before it continues to run down the side of the product. After the standard 70 hour test, **Master Flash®** tear resistance in the Grey actually improved, unlike other brands that lost 50%

## NO REGRIND

- Aztec only uses virgin EPDM on all of our products.

We are the manufacturer and control all aspects of our quality.



**Master Flash® 20 & 35 Year Warranty, UPC, IAPMO, CSA and ICC Listed Products!**





# **INTERCORP**

Fast. Knowledgeable. Friendly. Reliable.



**INTERCORP**   
[www.strong-point.net](http://www.strong-point.net)

**Los Angeles**  
800.762.2004

**New York**  
888.322.2622

**Chicago**  
800.533.9669

**Dallas**  
800.558.7222

**Atlanta**  
800.822.9690

**Portland**  
800.434.5606

**Houston**  
800.558.7222

**Cleveland**  
800.533.9669

**Miami**  
800.822.9690